



# Tubular Specialties Manufacturing, Inc.

13011 South Spring Street, Los Angeles, CA 90061-1685

Phone 800/Grab Bar (800/472-2227) or 310/515-4801

www.GrabBar.com • Fax 310/217-0653

# Series 550

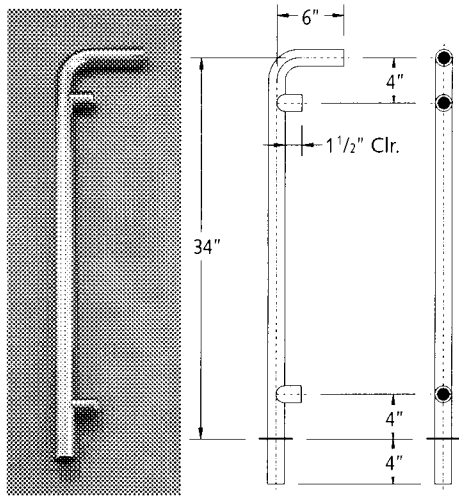
## Technical Data

Revised April 2005

### Stainless Steel Component Picket Railing System

#### Termination Post

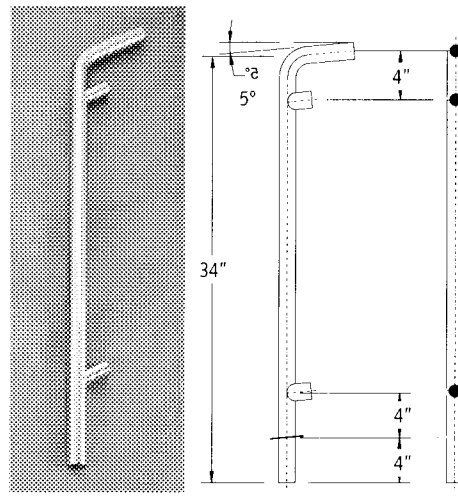
For use with level rail at each termination end of rail.



Model #	O.D.
<input type="checkbox"/> H-550	1 1/2"
<input type="checkbox"/> T-550	1.9"

#### Sloping End Post, Bottom

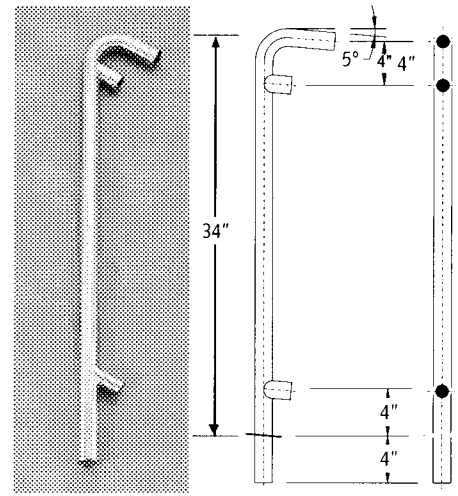
Slope is 1:12. Custom angles available.



Model #	O.D.
<input type="checkbox"/> H-552	1 1/2"
<input type="checkbox"/> T-552	1.9"

#### Sloping End Post, Top

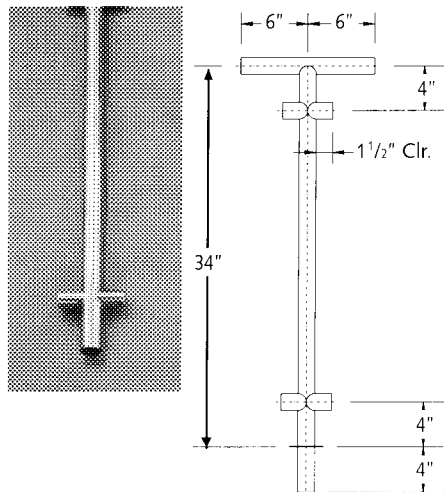
Slope is 1:12. Custom angles available.



Model #	O.D.
<input type="checkbox"/> H-552	1 1/2"
<input type="checkbox"/> T-552	1.9"

#### Intermediate Post

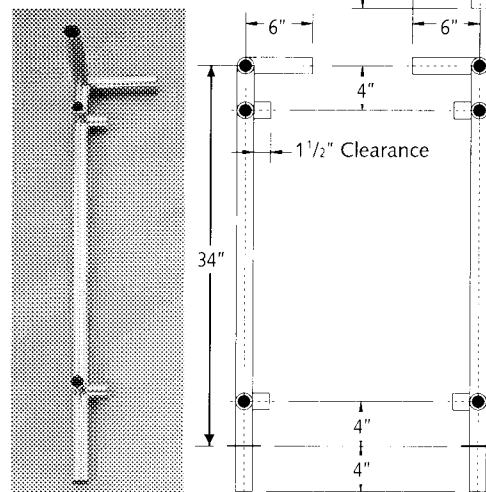
For use with level rail.



Model #	O.D.
<input type="checkbox"/> H-554	1 1/2"
<input type="checkbox"/> T-554	1.9"

#### 90° Corner Post

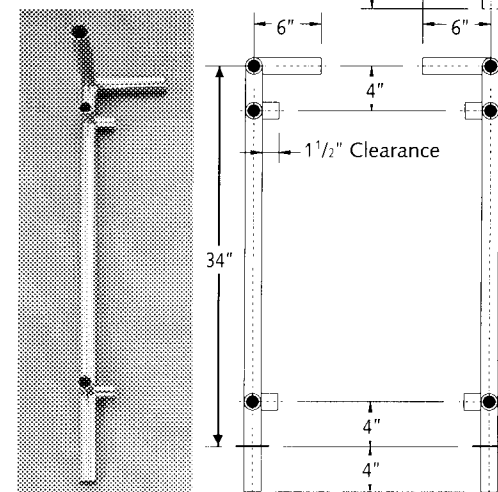
For use with level rails. Tubing is miter cut at 45° and heliarc welded to form a 90° corner.



Model #	O.D.
<input type="checkbox"/> H-556	1 1/2"
<input type="checkbox"/> T-556	1.9"

#### Intermediate Post

For use with graded surfaces. Slope is 1:12. Custom angles available.



Model #	O.D.
<input type="checkbox"/> H-558	1 1/2"
<input type="checkbox"/> T-558	1.9"

Manufacturer reserves the right to alter design or dimensions without formal notice and without incurring obligation.

© 2005, Tubular Specialties Mfg., Inc. All Rights Reserved

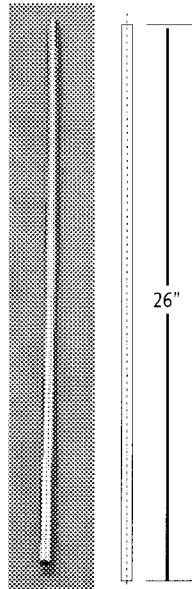


## Guarantee

TSM Series 550 Stainless Steel Component Railing System is guaranteed against defects in workmanship and material for one year from shipping date.

**Picket**

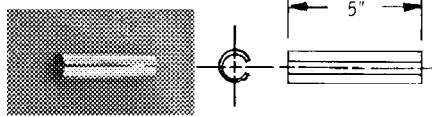
1/2" O.D. x 18 gauge  
(12.7 x 1.2mm).



**Model #**  
 568

**Internal Dowel**

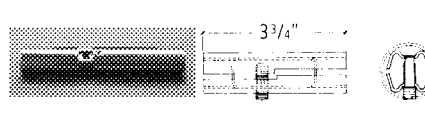
Used to connect component pieces together; one required for every hairline joint. Adhesive sealant supplied.



Model #	O.D.
<input type="checkbox"/> H-526	1 1/2"
<input type="checkbox"/> T-526	1.9"

**Splice Lock with Set Screw**

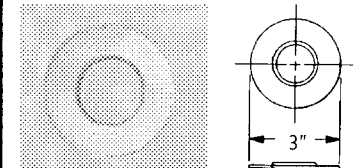
Used to connect component pieces together; one required for every hairline joint. Set screw supplied. Can be removed if desired.



Model #	O.D.
<input type="checkbox"/> H-526A	1 1/2"
<input type="checkbox"/> T-526A	1.9"

**R-1D Decorative Flange**

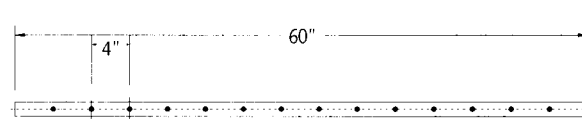
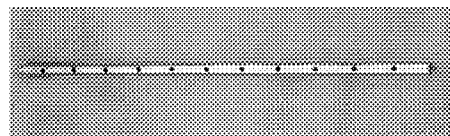
Optional: For finishing purposes only.



Model #	O.D.
<input type="checkbox"/> H-R-1D	1 1/2"
<input type="checkbox"/> T-R-1D	1.9"

**Perforated Tube**

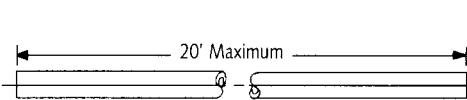
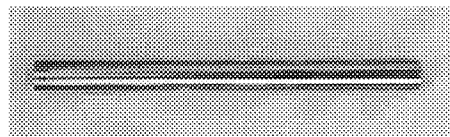
1" O.D. x 18 gauge (25x1.2mm). Specify for level plane or angle. If angle, 5° is standard; custom slopes available.



**Model #**  
 566

**Straight Tubing**

Stainless steel satin finish 16 gauge. Standard length is 20'. Smaller sizes can be custom cut.



Model #	O.D.
<input type="checkbox"/> H-106(65)	1 1/2"
<input type="checkbox"/> T-106(65)	1.9"

**Architectural Specification**

*Suitable for indoor or outdoor use. Acceptable for ADA ramp applications.*

Floor Railing Components \_\_\_\_\_ [fill in model names and numbers] shall be type 304 satin finish stainless steel with ends turned 90° by mandrel bending. End wall bracket shall be heliarc welded to tubing to form a single structural unit. Tubing shall be \_\_\_\_\_ [1 1/2" or 1.9"] O.D. (38 or 48mm) x 16 gauge (1.7mm) type 304 satin finish stainless steel.

**Floor Mounted Stainless Steel Components shall be Series 500 Models \_\_\_\_\_ as manufactured by Tubular Specialties Manufacturing, 13011 South Spring Street, Los Angeles, California 90061, tel (800)Grab Bar.**

**Materials/Workmanship**

**Tubing** Stainless steel satin finish type 304 (18-8). 1 1/2" and 1.9" (38 & 48mm) O.D. x 16 gauge (1.7mm) tubing.  
**Components** Stainless steel satin finish type 304 (18-8). 1 1/2" and 1.9" (38 & 48mm) O.D. x 16 gauge (1.7mm) tubing. For model 556: Tubing miter cut @ 45° and heliarc welded to form a 90° corner. For models 550 and 552: Tubing turned 90° by mandrel bending to preserve round shape of tubing.

**Installation**

1. TSM recommends maximum support spacing of 60" (1524mm) center to center.
2. It is important to comply with local codes in mounting railings.
3. The recommended method of installing floor mounted railing is to embed the posts 4" - 6" into concrete (102-152mm). The posts may be left as is, or a decorative flange (R-1D) may be added for finishing purposes only to conceal the grout surrounding posts.
4. R-1D is a disk with no screw holes. To install, place R-1D on the cement while it is wet. For a dry installation, apply epoxy, silicon adhesive or caulking material to the underside of the R-1D.
5. Assembly of components at jobsite is with internal dowels and adhesive (order one model H-526 or T-526 for each connection), splice lock with set screw (order one H-526A or T-526A for each connection) or welding. For adhesive connections, apply bead inside female component openings and insert dowels to form a hairline joint.
6. All railing systems should be inspected periodically to make sure their attachment to the wall is not loosening.

Manufacturer reserves the right to alter design or dimensions without formal notice and without incurring obligation.



**Guarantee**

TSM Series 550 Stainless Steel Component Railing System is guaranteed against defects in workmanship and material for one year from shipping date.